



# 122th IUVSTA Executive Council Meeting ECM-122

April 2016, from 15 to 17, Braga, Portugal



**Braga** is the third-largest metroplitan area behind Lisboa and Porto with an estimated population 190000 inhabitants (2011). Under *Roman Empire* was known as *Bracara Augusta*, the center of the *Province of Gallaecia*. In 2012 was selected as the European Youth Capital. **Braga is one of Portugal's oldest city and offers outdoor adventure thanks to its close proximity to Peneda-Gerês national park.**

[http://www.cm-braga.pt/wps/portal/public\\_en](http://www.cm-braga.pt/wps/portal/public_en)

For registration

<https://www.congressospco.abreu.pt/ECM122-31295.aspx>



# ECM 122 Venue: INL Accommodation: Meliã



**Meliã Braga  
Hotel \*\*\*\*\***

**6-8 min walk Hotel - INL**

The 122th Executive Council Meeting  
will be held in **INL**, International  
Iberian Nanotechnology Laboratory



<http://inl.int/>



**INL main entrance**

Confeitaria Ibérica

Google

R. José Maria Ottoni

R. de Urjães

- 47.000 of Campus area
- About 26.000 of built area
- 700 Nanofabrication Clean Room



- Close Campus of Minho University
- Provides 22.000 of laboratory space and state-of-the-art equipment



# ECM 122 - Accommodation \* \* \* \*

## Mélia Braga Hotel & SPA

Modern Hotel

6 Meeting and banqueting Rooms

Presidential Suite

20 Executive Suites + connecting rooms

182 Rooms

Estimated **6 -8 min** walk from **INL**





# Scientific Event

## 14th IUVSTA School on

# NANO - OPTICS

## 11 to 15 APRIL 2016

❖ IUVSTA Officers are invited and welcome to join to the Closing Lecture and Closing Session on Friday morning.

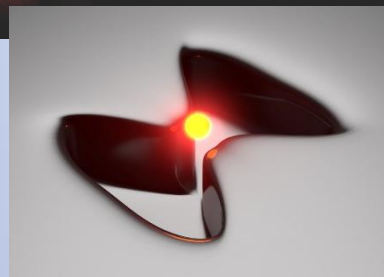
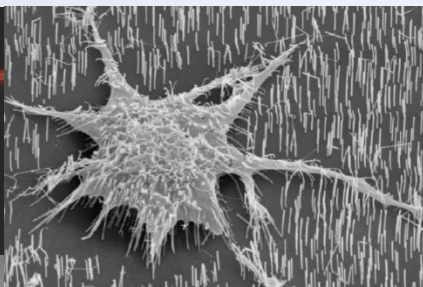
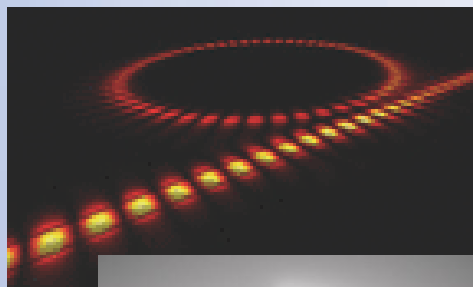
- The self-service lunch (Friday lunch) at INL is between 12-15 Euros.

Monday	Tuesday	Wednesday	Thursday	Friday	Saturday	Sunday
11 April 2016	12 April 2016	13 April 2016	14 April 2016	15 April 2016	16th April	17th April
	RICHARD Van DUYNÉ				ECM 122	ECM 122
	OPENING LECTURE	ANATOLY ZAYATS Invited Lecture	CHRISTELLE PRINZ Invited Lecture	TORD WINGREN Invited Lecture		
	Break	Break	Break	Break		
	D. KASPROWICZ Invited Lecture	A. GARCIA MARTIN Invited Lecture	ROMAIN QUIDANT Invited Lecture	THOMAS KLAR CLOSING LECTURE		
	Break	Break	Break	Break		
	CONTRIBUTE LECTURE	PETR KUZEL Invited Lecture	CONTRIBUTE LECTURE	STUDENTS Reporting		
	Lunch	Closing the gap		CLOSING REMARKS	Lunch INL	Lunch INL
		Lunch	Lunch	Lunch- Departure		Departure
14:00 OPEN Registration	AARON LEWIS Invited Lecture	TOUR	KJELD PEDERSEN Invited Lecture		ECM 122 INL	EXTRA Activities Optional Also for Monday Attached A, B, C and D
	Closing the gap		Closing the gap			
	Break		Break			
	Guided VISIT to INL Laboratories		Shotgun Poster Pres.			
	Break		Poster Session			
IUVSTA 17h30	Exhibitors Presentation		HANDS-ON WORKSHOP			
	Shotgun Poster Pres.					
	Break					
Welcome Reception 18:00	Poster Session		BRAIN STORMING Group Exercise		Guided Tour to INL	
		"School" DINNER		Dinner	DINNER	

# NANO - OPTICS 14th IUVSTA School

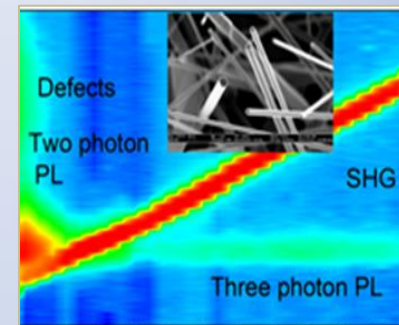
APRIL 11 to 15 2016

Venue: INL-Braga, Portugal



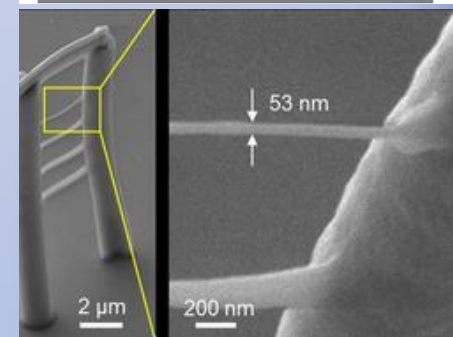
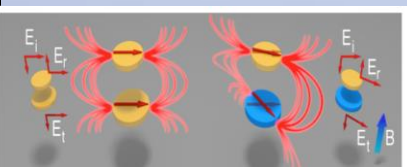
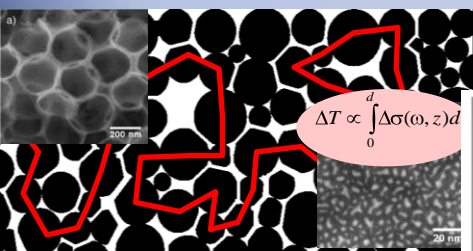
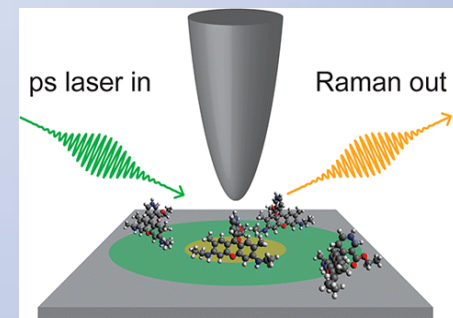
Nano /Biophysics/Medicine  
NLO spectroscopies.  
Ultrafast spectroscopy.  
Human-centric lighting.

**Topics**  
Nanoscopy. Nano-plasmonic.  
Nano(Bio)photonics.  
Single-molecules techniques.



## Speakers

- Thomas Klar
- Richard Van Duyne
- Anatoly Zayats
- Christelle Prinz
- Romain Quidant
- Kjeld Pedersen
- Petr Kuzel
- D. Kasprovicz
- Antonio G. Martin
- Tord Wingren
- Aaron Lewis



Abstract Deadline 21st Feb

Early Bird Registration 17th March

<http://nanoopticsschool.org/>

## ECM122 FEES

Fee per Participant: 370 € (Meliã Hotel)

- Accomodation: 2 nights (15th and 16th), one person in single bed room
- Coffee breaks during ECM meeting
- Self-service lunches at INL – Saturday and Sunday
- Dinner Friday and Saturday

Fee per Participant + accompanying person: 500 € (Meliã Hotel)

- Accomodation: 2 nights (15th and 16th), two persons double bed room
- Coffee breaks during ECM meeting (for participant)
- Self-service lunches at INL – Saturday and Sunday (2 persons)
- Dinner Friday and Saturday (2 persons)





ECM 122  
Dinner  
16th April 2016

“ Bom Jesus Hotels ”





## **Extra nights and Extra Activities (Optional)**

Per extra night 14th or 17th– participant single room 79 € /per night

Per extra night 14th or 17th– participant plus accompanying person  
double bed room 89€/ per night

### **Half-Day Extra Activities Sunday Afternoon** –minimum 10 persons

Option A – Walking Tour “Guimarãres” 45 € /per person

Option B – Visit Gerês 50 € / per person

### **Full-Day Extra Activities Monday** –minimum 10 persons

Option C – Visit Douro 150 € /per person

Option D– Douro Cruise 180 € / per person



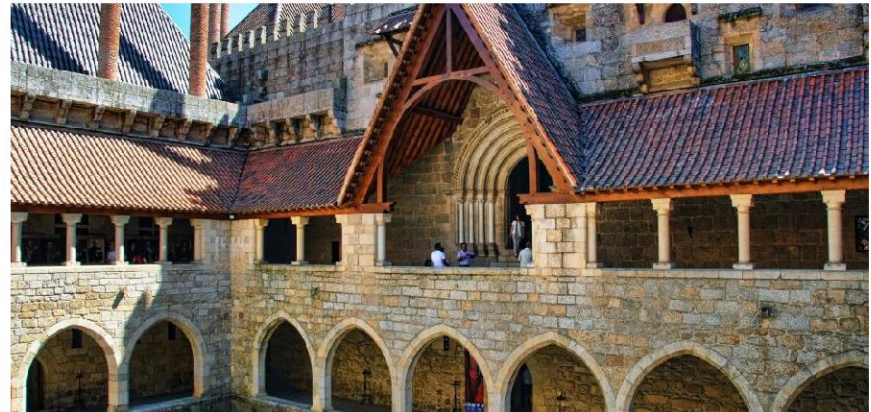
# A) Walking Tour Guimarães (Half Day)

Tour Suggestion – Sunday 17<sup>th</sup> April 2016

Departure for a visit to one of the most beautiful and historical cities of Portugal, Guimarães - the Nation's birthplace. Surrounded by parks and a 15th century Palace, stands the Castle of Guimarães, which will be our first stop. Simple, but yet a remarkable site, a place full of story. It was here that D. Afonso Henriques was born in the 12th century from the Count Henrique and his wife D. Teresa. The future king was baptized in the Romanesque chapel of São Miguel outside the castle gates and close to the Ducal Palace.

Continuing with a visit to the 15th century Palace of the Dukes of Bragança, a massive and imposing building with distinctive turrets and brick chimneys. It was built in 1401 by the first Duke of Bragança and rehabilitated in the last century.

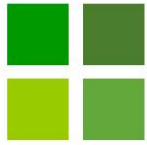
The Tour proceeds for a guided tour to the historic centre of Guimarães classified as World Heritage by UNESCO, with its medieval streets layout which is lined with historic buildings everywhere you look. Stop at Largo da Oliveira one of the central points. Free time for a calm stroll. End of the Tour around.



**Price per person: € 45,00**

Valid for a minimum of 10 persons





## B) Visit Gerês (Half Day)

Tour Suggestion – Sunday 17<sup>th</sup> April 2016

Departure for a visit to the Gerês National Park . The Park was created with the aim of preserving the natural beauty, the flora and the fauna of the region.

Apart from a number of picturesque villages, the woodlands and the mountain scenery, the park area contains much of historic interest.

The exuberant vegetation covering the mountains, exhibit every shade of green, include a holly bush wood - unique at a national level - and endemic species such as the Gerês lily, whose blue-violet colours grace the fields. The rugged mountainous terrain is cut across by rapidly flowing rivers and streams, including many waterfalls, which finally slow down their pace in dams such as those of Caniçada, Vilarinho das Furnas or Portela do Homem. The landscapes are quite stunning. Keep your eyes peeled, because you may be able to spot a roe deer (symbol of the Park) or its predator, the Iberian wolf. It is more common to come across garrano ponies -which are small wild horses that run freely across the hills. Return to Braga.

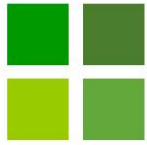


**Price per person : € 50,00**

Price Includes: Transport by Tourism Air Conditioning Motorcoach; Assistance of an official guide

Valid for a minimum of 10 participants





# C) Visit Douro (Full Day)

Tour Suggestion – Monday 18<sup>th</sup> April 2016

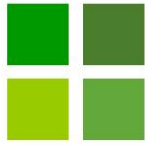
Departure towards the Douro Valley region, worldwide known and famous for the wine production. The first stop will be at Vila Real, a beautiful and ancient city full of manor houses that it's one of the main characteristics of this city. Panoramic walking tour through the city center. After this walking tour we will continue to "Solar de Mateus". The Palace, House or Solar de Mateus is one of the most significant works of the Portuguese civil architecture of the Baroque period, probably built by the Italian Architect Nicolau Nasoni. The building it's surrounded by beautiful gardens, lined with green boxwood and dotted with flower beds. Mateus it's also known for the production of the wine "Mateus Rose". Time for Lunch. The tour will continue towards the centre of the Douro Valley region, passing through the city's of Sabrosa and Pinhão. Visit and wine taste at "Quinta do Seixo" a wine estate with over one hundred years. Quinta do Seixo also "offers" an outstanding view over the vineyards of this region that was declared by UNESCO as world heritage. Our journey continues with a visit to the city of Regua before the return to Guimaraes. End of the Tour around 18h00.



**Price per person: € 150,00**

Valid for a minimum of 10 persons





# D) Douro Cruise – Full Day

Tour Suggestion – Monday 18<sup>th</sup> April 2016

- 9:00am Passengers board at the Cais da Estiva (Porto)
- 9:15am Beginning of the cruise to destinations Pinhão
- Breakfast served on board
- 10:20am Rise Crestuma-Lever (height 14 meters)
- 12.00 Port of Honor and lunch served on board
- 13h20 Rise in Carrapatelo Dam (height 35 meters)
- 15:45 Arrival at Régua
- 17:30 Rise in Bagaúste Dam (height 27 meters)
- Snack on board
- 18:45 Arrival at the Pinhão | Free time
- 20h03 Train travel in Douro Line to the Port
- 23h20 Arrival at Oporto (S. Bento railway station)



**Price per person: € 180,00**

**Included Services:**

- Transfer Braga – Porto – Braga
- Douro Cruise – Full Day
- Valid for a minimum of 10 persons

# Travel information

## From PORTO Airport (Several options)

- ❖ Taxi from the airport to the train station Porto-Campanhã  
Then, by train from **Porto-Campanhã** station to **Braga** train station. About 40 min journey by Alfa (ca. 20-25 €). More information on train connection at <https://www.cp.pt/passageiros/en/>  
Arriving at Braga train station to Meliã Braga Hotel or INL – suggestion take a taxi (10-15 min, 8-9 €).
- ❖ At the airport take “Metro do Porto” to train station **Porto-Campanhã** <http://www.metrodoporto.pt/en/>. Ca. 30 min, 4 €. Then by train from **Porto-Campanhã** station to **Braga** train station. Arriving at Braga train station to Meliã Braga Hotel or INL – suggestion take a taxi (10-15 min, 8-9 €).
- ❖ At the airport take low cost bus transfer **GETBUS** to **INL/Hotel** (bus stop). More information <http://www.getbus.eu/index.php?lang=en&seccao=1>
- ❖ **Taxi** from airport in **Porto** to **Braga** would cost around 90 Euros. Please check the value with the taxis driver.



# Travel information cont.

- **From LISBON Airport:** take a taxi (about 10 €) or the Red line of “Metro de Lisboa” to the train station “Oriente”.

More information on “Metro de Lisboa” at <http://metro.transporteslisboa.pt/eng/>

From “Oriente” station there are connections from Lisbon to the Braga main train station (3h50 journey by “Alfa” or “IC”, 50€) .

More information on train connection at <https://www.cp.pt/passageiros/en/>

There are also flight connections between Lisbon and Porto: flight ca. of 1h

## **Arriving by train at Braga station**

Arriving at Braga train station to Meliã Braga Hotel or INL – suggestion take a taxi (10-15 min, 8-9 €).

# ECM 122 – Registration and hotel booking – Deadline 22th March

For Hotel booking and ECM registration please go to Registration link:

<https://www.congressospco.abreu.pt/ECM122-31295.aspx>

The reservation of the room in this Hotel is guaranteed only till 22th March.

- There is a **Total Fee**: Accommodation + ECM registration
- The Fee includes two nights with
  - check-in: 15th April and check-out: 17th April
- **For Extra nights and Extra Activities** (Optional) for Sunday Afternoon and Monday <https://www.congressospco.abreu.pt/ECM122-31295.aspx>  
Details are sent in attachment.

**Contact regarding extra – activities: Joana Pereira** [joana.v.pereira@abreu.pt](mailto:joana.v.pereira@abreu.pt)

## Contact regarding ECM

Local organisation on behalf of Portuguese Vacuum Society (SOPORVAC)

<http://www.soporvac.pt/>

Ana G. Silva, [acs@fct.unl.pt](mailto:acs@fct.unl.pt) (+351 212948576 / ext 10552)

Physics Department, Universidade Nova de Lisboa

